



IMPORTANT WARRANTY & INSTALLATION  
INSTRUCTIONS ATTACHED

*Please Forward All Attached Information to Consumer  
Warranty Not Valid Unless Returned to CORSA Performance*

**We ask that you take a few moments to complete our warranty registration form:**

TO ACTIVATE YOUR WARRANTY GO TO:  
**[CORSAPERFORMANCE.COM/WARRANTY](http://CORSAPERFORMANCE.COM/WARRANTY)**



**For Full-Color Installation Instructions, Please Visit:  
[CORSAPERFORMANCE.COM](http://CORSAPERFORMANCE.COM) and Search by Part Number**

Please be sure to review the enclosed instructions prior to beginning the installation process.  
If you have any questions about the enclosed parts, instructions or encounter a problem during installation:  
**CALL CORSA PERFORMANCE TECHNICAL ASSISTANCE AT 800.486.0999**

Please take time to read and understand these installation instructions.

CORSA recommends that the installation of this system be performed by a qualified service center or professional muffler installer who has the necessary equipment, tools and experienced personnel. However, if you decide to perform this install, the use of a hoist and an additional person will be required.

**CAUTION:** Never work on a hot exhaust system. Allow time for the vehicle to cool. Always wear eye protection when working under a vehicle.

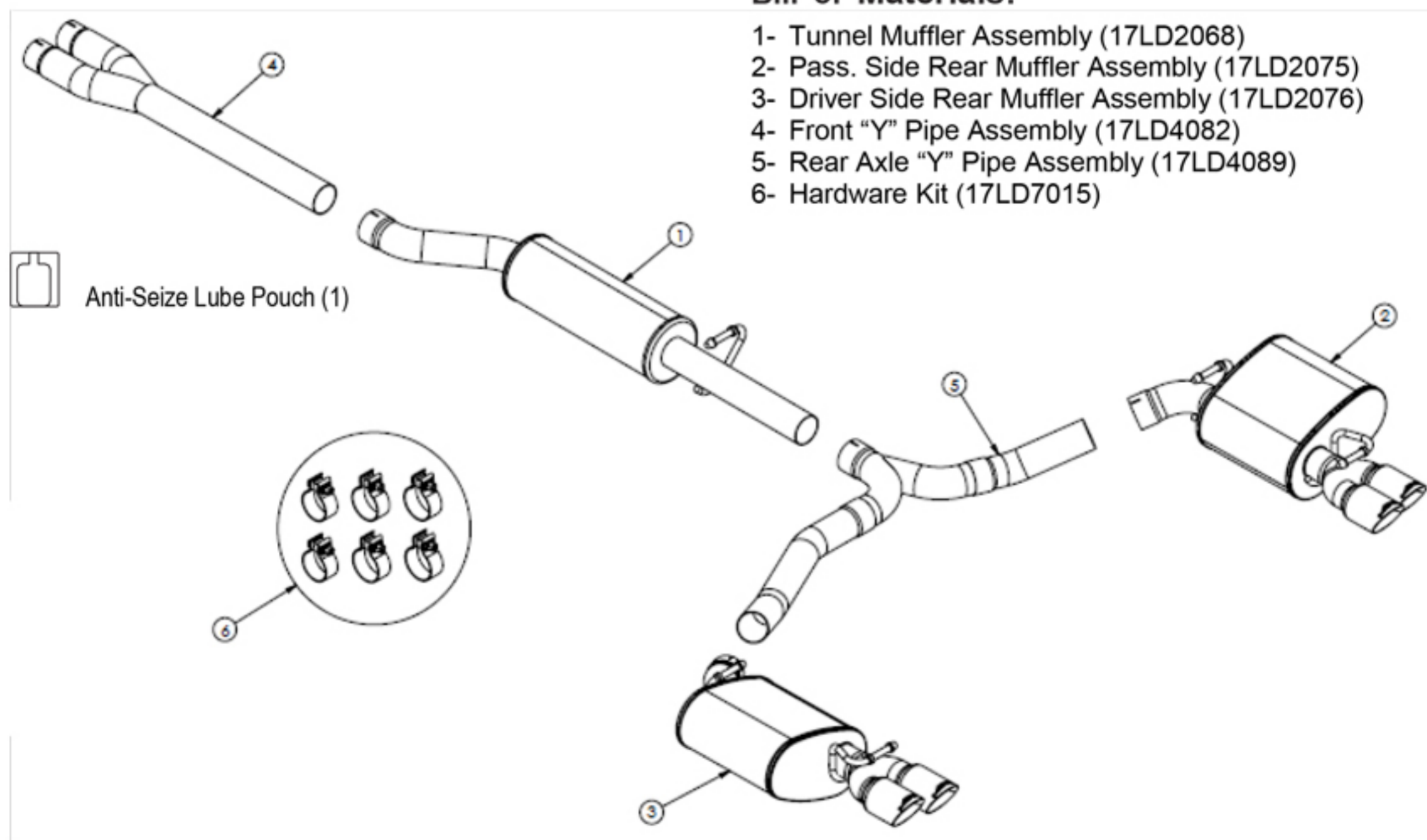
## Recommended Tools:

- Safety Glasses
- 10mm Wrench & Socket
- 13mm Socket
- 15mm Wrench & Socket
- Grommet Pullers
- 3/8" Ratchet
- 12" Ratchet Extension
- Torque Wrench

Please confirm that all parts are present before beginning the factory exhaust system removal and CORSA Exhaust system installation.

## Bill of Materials:

- 1- Tunnel Muffler Assembly (17LD2068)
- 2- Pass. Side Rear Muffler Assembly (17LD2075)
- 3- Driver Side Rear Muffler Assembly (17LD2076)
- 4- Front "Y" Pipe Assembly (17LD4082)
- 5- Rear Axle "Y" Pipe Assembly (17LD4089)
- 6- Hardware Kit (17LD7015)



## Factory Exhaust System Removal:

1. Loosen the clamp after the rear “Y” split, located just in front of the spare tire well, using a 15mm wrench. **(See Fig. A)**
2. Unbolt the driver side rear hanger mounts from the chassis using a 13mm socket and ratchet, and long extension. **(See Fig. B & C)** Carefully remove the rear driver side section of the stock exhaust from the vehicle.

**NOTE:** The use of a soapy water solution may aid in the removal and later installation of the hangers in the rubber isolators.

3. With the rear driver section on the ground, remove the factory rear muffler hangers from the rubber isolators on the hanger mounts using a grommet puller or a similar device. **(See Fig. D)**  
Note the position and orientation of each hanger mount. Set aside the rear muffler hanger mounts and the retaining bolts to be reused during the installation process.



FIG. A



FIG. B



FIG. C



FIG. D

4. Remove both of the factory cross braces using a 13mm socket and ratchet. **(See Fig. E)**
5. Loosen the two clamps at the front of the factory exhaust system using a 15mm socket and ratchet. **(See Fig. F)**
6. Remove the grounding clip from the passenger side rear muffler hanger. **(See Fig. G)**
7. Remove the hangers from the grommets located behind the factory tunnel muffler using grommet pullers or a similar device. **(See Fig. H & I)**
8. Repeat step 2 for the passenger side rear hanger mounts. **(See Fig. J)** Carefully remove the remaining stock exhaust system from the vehicle. **(See Fig. K)**
9. Repeat step 3 for the passenger side. **(See Fig. L)**

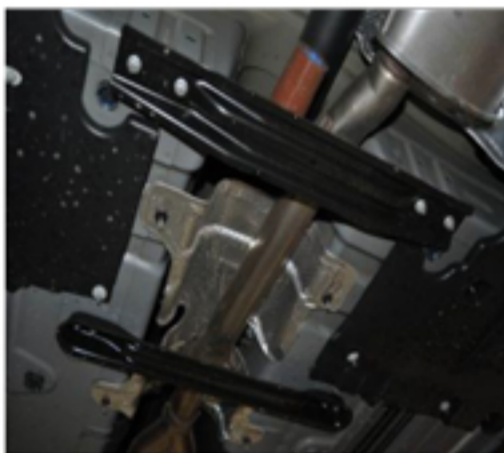


FIG. E



FIG. F



FIG. G



FIG. H



FIG. I



FIG. J



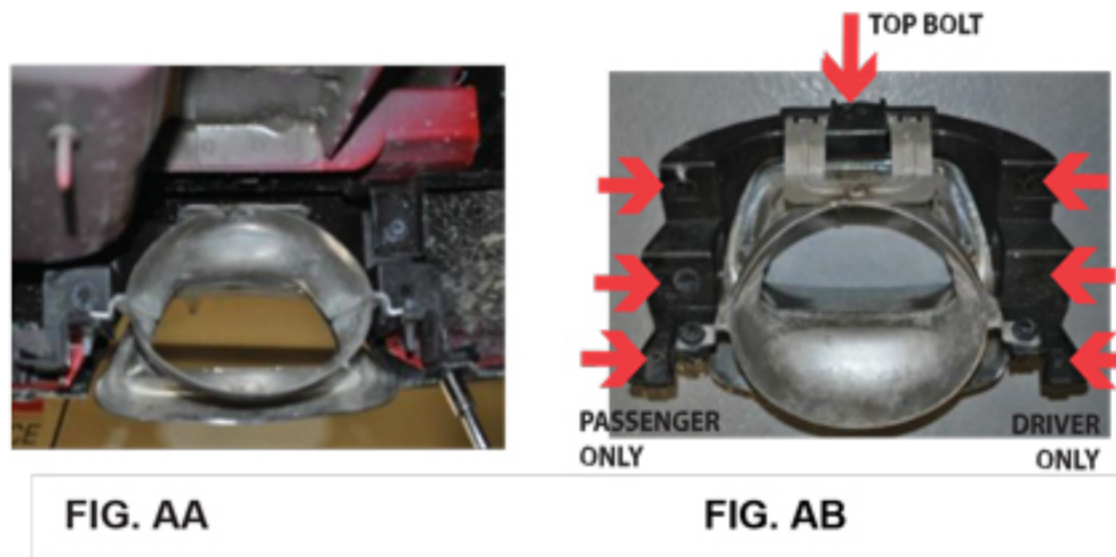
FIG. K



FIG. L

### Bumper Mounted Tip Removal:

1. Using a 10mm socket, remove the 5 lower bolts holding the tip to the rear fascia (See Fig. AA & AB), Then using a 10mm wrench, remove the top bolt. (Fig. AB)
2. Once the 6 bolts per side are removed, the tip can be pulled down and towards the front of the vehicle to be removed.



### CORSA Exhaust System Installation:

**INSTALLATION NOTE:** Be sure to apply the provided anti-seize lubricant to all bolts, fasteners and clamps. A pouch is included with the hardware kit. Apply the supplied anti-seize lubricant to the threads ONLY of all TORCA band clamps. Failure to follow this procedure can cause the nuts to seize on clamps and potentially damage threads. **WARNING:** Be sure to thoroughly clean hands after use. Anti-seize lubricant will tarnish stainless steel parts.

All clamps should be tightened using a properly calibrated Torque Wrench. Using an air impact gun will damage the clamp and reduce its ability to effectively seal the joint. It may also cause the joint to separate thereby causing damage to your exhaust system and your vehicle.

**NOTE:** Align all clamps so that the center of the clamp bolt is 90 degrees from the notch in the pipe (See Fig. M)

1. Remove all exhaust system components from the shipping carton, including the six supplied clamps.
2. Measure upstream from the outlet edge of one of the cat pipes, and mark the pipe at 1.5 inches. This is a guideline for where the edge of the inlet of this system should approximately be located when installed. (See Fig. N)

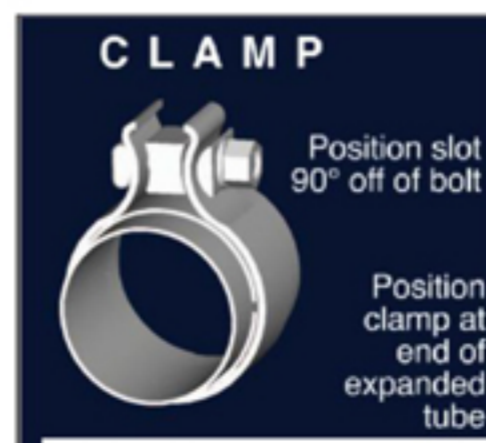


FIG. M

FIG. N

3. Locate the CORSA Y-pipe assembly, and both of the 2.25" clamps. Place the two clamps over the inlet side of the Y-pipe, then slide it over the retained stock pipes as shown, until it is aligned with the mark from step 2. **(See Fig. O)** Next, verify the clamps are oriented as shown, and then snug the clamps using a 15mm socket and ratchet, leaving them loose enough for later adjustment. **(See Fig. P)**
4. Locate the tunnel muffler assembly and a 2.5" clamp. Place the clamp over the inlet side of the tunnel muffler, and then slide the muffler inlet onto the passenger side outlet of the Y-pipe assembly as shown. **(See Fig. Q)** Next, insert the tunnel muffler hanger into the factory grommet. Rotate the tunnel muffler pipe until the hanger is horizontal as it passes through the grommet, then snug the clamp using a 15mm socket and ratchet, leaving it loose enough for later adjustment. **(See Fig. R & S)**



FIG. O



FIG. P



FIG. Q



FIG. R



FIG. S

5. Locate the rear axle Y-pipe assembly and another 2.5" clamp. Place the clamp over the inlet side of the Y-pipe, and then slide it onto the outlet of the tunnel muffler assembly. **(See Fig. T)** Next, rotate the axle pipe until the middle pipe section is horizontal, then snug the clamp using a 15mm socket and ratchet, leaving it loose enough for later adjustment. **(See Fig. U & V)**

NOTE: The unbolted hanger assemblies from the removal process should now be installed onto the corresponding hangers on both of the CORSA rear mufflers by pushing the rubber grommets onto the hangers. Once again, a soapy water solution will aid in this installation process. **(See Fig. W & X)**

6. Locate the driver side rear muffler assembly and another 2.5" clamp, as well as the retaining bolts for the factory hanger mounts. Place the clamp over the inlet side of the muffler, then slide the pipe onto the end of the axle pipe assembly. Align the hanger mounts with the mounting holes in the chassis, and secure with the 13mm bolts. **(See Fig. Y & Z)** Using a torque wrench, torque the 13mm bolts to 18 ft-lbs.



FIG. T



FIG. U



FIG. V



FIG. W



FIG. X



FIG. Y



FIG. Z

7. Adjust the amount of overlap of the driver side muffler inlet pipe onto the axle pipe until the exhaust tips look properly positioned in the bumper opening, and then snug the clamp using a 15mm socket and ratchet, leaving it loose enough for later adjustment. **(See Fig. BB)** The minimum amount of pipe overlap should be just enough to prevent any gap from showing through at the base of the notch in the inlet pipe.
8. Insert the factory grounding clip onto the passenger side rear muffler hanger on the inlet side of the muffler.
9. Repeat steps 6 and 7 for the passenger side rear muffler assembly. All rear muffler hangers should be swung forward of vertical when the front to back position of the rear muffler assemblies are correct.
10. Replace both factory tunnel braces in their original locations. Using a torque wrench, torque the 13mm bolts to 18 ft-lbs. **(See Fig. CC)** Using a shop stand or a spacer block, create a minimum of 1/2 inch clearance between both the Y-pipe and the front factory tunnel brace, and also the tunnel muffler inlet and the rear factory tunnel brace. This gap will be maintained when all clamps are tightened in step 12.
11. Visually inspect the exhaust system position, tip alignment, clamp orientation, and exhaust pipe clearance. Make any necessary adjustments at the slip joints.
12. With the tips held in the desired location, start at the front of the vehicle and tighten the nuts on the clamps. Torque nuts to 45 ft-lbs. Remove the spacer or stand from step 10.
13. It is **STRONGLY SUGGESTED** that all clamps be checked and re-tightened (if necessary) to the recommended torque after initial road testing of the vehicle, as thermal cycling has occurred on the system. Please wait until system has fully cooled to perform this step.

**NOTE:** During cold weather start-up, you may experience an exhaust sound that is deeper and louder in tone than usual. This is temporary and will diminish to normal levels once your engine has reached its normal operating temperature.

**NOTE:** Immediately following the installation of your exhaust system, you may experience a trace of smoke after initial start-up. DO NOT be alarmed. The smoke is caused by the burning of a small amount of forming oil residue used in the manufacturing process.



FIG. BB



FIG. CC