



**Part number IS2200
1985-87 Toyota Corolla GTS
1.6L Fuel Injected 4 cyl.**

- 1- Two piece intake system
- 1- **2.75" Injen filter (#1010)**
- 1- 2.75" straight hose (#3043)
- 1- 2.50" straight hose (#3048)
- 4- Power-bands (.040)(.312) (#4003)
- 1- 1 1/4" 6mm vacuum line (#3087)
- 1- m6 vibra-mount (#6020)
- 1- m6 flange nut (#6002)
- 1- fender washer (#6011)
- 1- instruction

Note: Injen Technology parts and accessories are now sold on line at: **"injenonline.com"**

Congratulations! You have just purchased the best engineered, dyno-proven air intake system available.

Please check the contents of this box immediately.

Report any defective or missing parts to the Authorized Injen Technology dealer you purchased this product from.

Before installing any parts of this system, please read the instructions thoroughly. If you have any questions regarding installation please contact the dealer you purchased this product from.

Installation DOES require some mechanical skills. A qualified mechanic is always recommended.

*Do not attempt to install the intake system while the engine is hot. The installation may require removal of radiator fluid line that may be hot.

Injen Technology offers a limited lifetime warranty to the original purchaser against defects in materials and workmanship. Warranty claims must be handled through the dealer from which the item was purchased.

Injen Technology 285 Pioneer Place Pomona, CA 91768 USA

Please check the contents of this box immediately.

Note: This intake system was Dyno-tested with an Injen filter and Injen parts the use of any other filter or part will void the warranty and CARB exemption number.

Parts and accessories are available on line at "Injenonline.com"



Figure 1

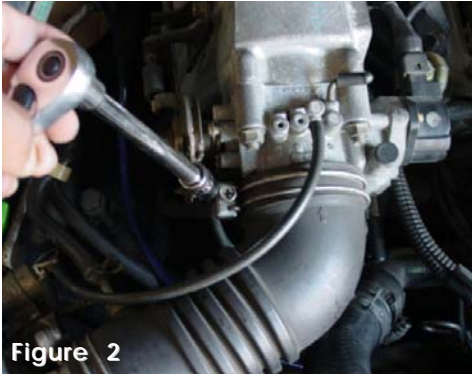


Figure 2

Loosen the stock clamp and remove the stock air intake duct from the mass air flow sensor to the throttle body.



Figure 3

Unplug the hard pipe vacuum line plugged into the air intake duct.



Figure 4

Remove the harness clip from the mass air flow sensor.

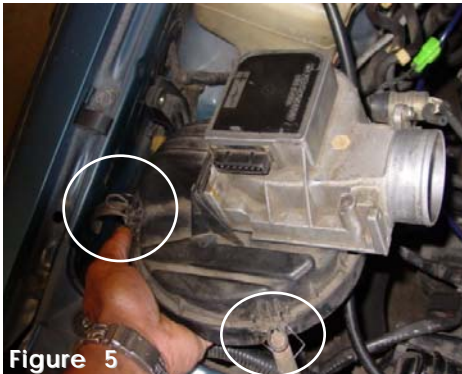


Figure 5

Unfasten the clamps and remove the entire top section with mass air flow sensor attached.



Figure 6

Remove the 6mm bolts holding the air intake base to the car frame. Once all bolts have been removed pull the entire air box with filter from the engine compartment.



Figure 7

The round air intake box is removed from the engine compartment.

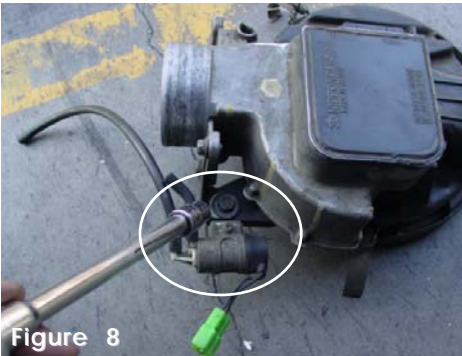


Figure 8

Unbolt the vacuum switching valve from the mass air flow sensor.



Figure 9

View of the vacuum switching valve off the mass air flow sensor.



Figure 10

Unbolt the mass air flow sensor from the top section of the air intake box.

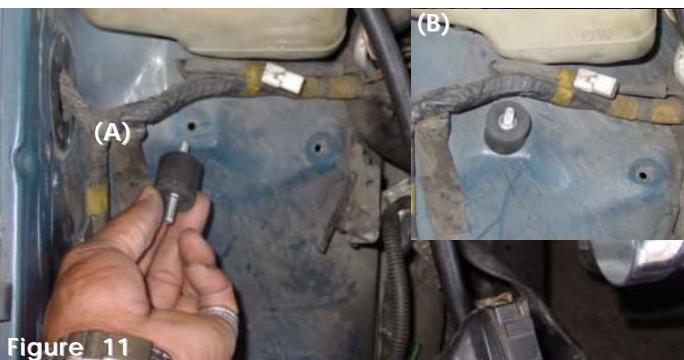


Figure 11

Once the air intake box has been removed, screw in the m6 vibra-mount into the pre-tapped hole near the fender wall (A). Screw the vibra-mount into the wheel well until it is secure (B).



Figure 12

Place the straight hose over the throttle body and use two clamps. Tighten the clamp on the throttle body side to keep the hose in place.



Figure 13

Slip the primary intake into the 2 1/2" hose on the throttle body. Position the intake and semi-tighten the clamp.

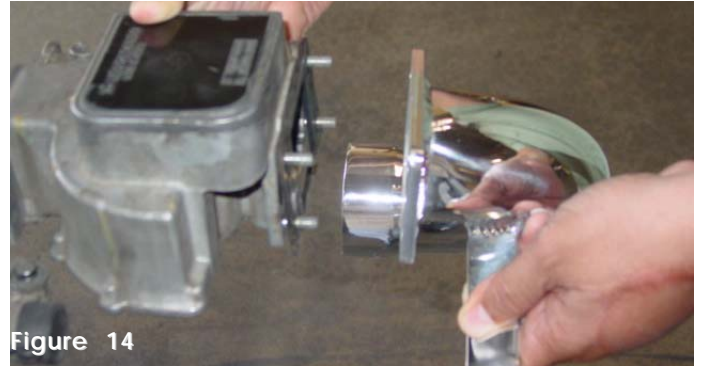


Figure 14

Take the secondary intake and butt the flange end to the mass air flow sensor. Use the stock nuts and washer to fasten the intake to the mass air flow sensor.



Figure 15

View of the intake attached to the mass air flow sensor.



Figure 16

Once the intake has been attached to mass air flow sensor, take the air filter and press it over the intake end. Fasten the clamp on the filter neck until the filter is snug on the intake.

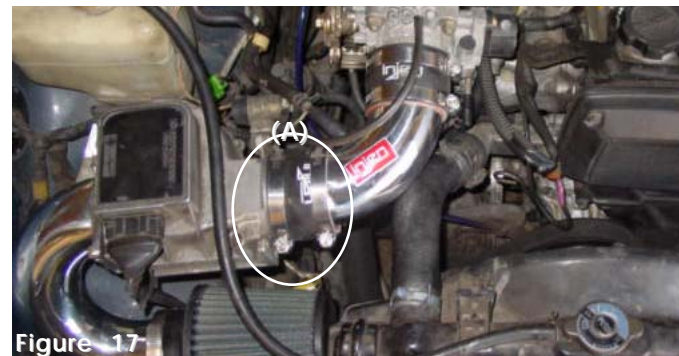


Figure 17

Take the 2 3/4" straight hose and place it over the outlet side of the mass air flow sensor (A). The entire filter and mass air sensor is lowered into the engine compartment. Press the end with the hose over the primary intake. Adjust the entire intake assembly and semi-fasten the clamp over the intake side.



Figure 18

The bracket attached to the secondary intake is now aligned to the vibra-mount. Once the bracket has been aligned, take the fender washer and m6 nut and fasten the bracket in place.

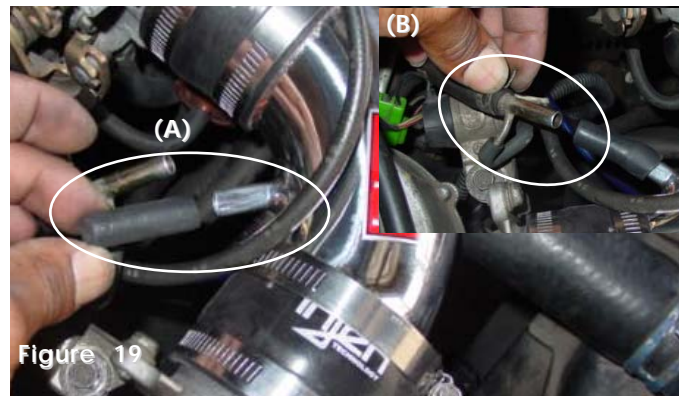


Figure 19

Take the 6mm vacuum stub and press it over the vacuum port on the intake(A). Take the hard pipe vacuum line and press it into the 6mm stub on the intake port(B).



Figure 20

Align the entire intake assembly for best fit. Once there is proper clearance through-out the length of the intake, continue to tighten all nuts, bolts and clamps.

1. Once the installation is complete, reconnect the negative battery terminal before you start the engine.
2. Align the entire intake system for the best possible fit. Once the intake has been properly fitted continue to tighten all nuts, bolts and clamps.
3. Periodically, recheck the alignment of the intake system and make sure there is proper clearance around and along the length of the intake. Failure to follow proper maintenance procedures may cause damage to the intake and will void the warranty.
4. Start the engine and listen carefully for any odd noises, rattles and/or air leaks prior to taking it for a test drive. If any problems arise go back and check the vacuum lines, hoses and clamps that maybe causing leaks or rattles and correct the problem.
5. Check the filter for excessive dirt build up. Clean or replace the filter with an original Injen filter (can be bought on-line at "injenonline.com"). Congratulations! You have just completed the installation of the best intake system sold on the market. Enjoy the added power and performance of your new intake system.