



**Part number PF5011**

**Jeep Cherokee XJ  
1991-2001 4.0L L6**

- 1- MR Tech Power-Flow intake (SR)
- 1- Web Nano/fiber dry filter (#1014)
- 1- Heat shield HS5000 (#11011)**
- 1- Elbow hose (#3139)
- 1- Vinyl cap 1/2" (#8034)
- 2- Power-band (.048) (#4004)
- 1- Vibra mount male/female M8 (#6061)
- 1- Small washer M8 (#6011)
- 1- Nut M8 (#6017)
- 1- 15mm hose @ 17.5"L (#3079)
- 1- 12mm hose @ 3.5"L (#3078)
- 3- Composite clamps (#4010)
- 3- 1/2 hex bolts (#6019)
- 1- 4 page installation instructions.

Note: The C.A.R.B. Exempt sticker must be attached under the hood in a manner such that it is easily viewed by an emissions inspector.

**Congratulations! You have just purchased the best engineered, dyno-proven cold air intake system available.**

**Please check the contents of this box immediately.**

Report any defective or missing parts to the Authorized Injen Technology dealer you purchased this product from. Before installing any parts of this system, please read the instructions thoroughly. If you have any questions regarding installation please contact the dealer you purchased this product from. Installation DOES require some mechanical skills. A qualified mechanic is always recommended.

\*Do not attempt to install the intake system while the engine is hot. The installation may require removal of radiator fluid line that may be hot.

Injen Technology offers a limited lifetime warranty to the original purchaser against defects in materials and workmanship. Warranty claims must be handled through the dealer from which the item was purchased.

Injen Technology 244 Pioneer Place Pomona, CA 91768 USA

**Please check the contents of this box immediately.**

**Note: This intake system was Dyno-tested with an Injen filter and Injen parts. The use of any other filter or part will void the warranty and CARB exemption number.**

**Parts and accessories are available on line at "Injenonline.com"**

**Note:** The installation of this cold air intake does require mechanical skills. Removal of the front bumper requires loosening and removing several plastic plugs and screws that may be difficult. In addition to removing the bumper, you will also have to remove the air resonator box, battery and tray when beginning this installation. **Injen strongly recommends that this system be installed by a professional mechanic.**

**MR Technology, "The World's First Tuned Intake System!"**

**Optimum performance, Factory safe air/fuel ratio.**





Figure 3  
OEM intake system.

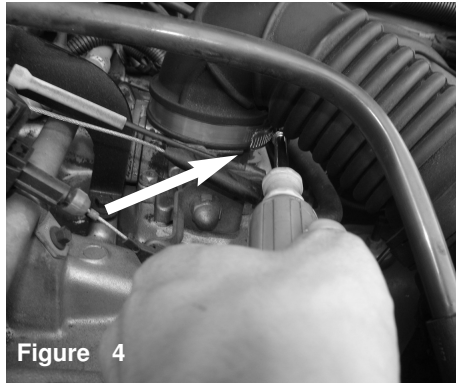


Figure 4  
Loosen the clamp on the throttle body using 8mm nut driver. Pull back the tube from throttle body.

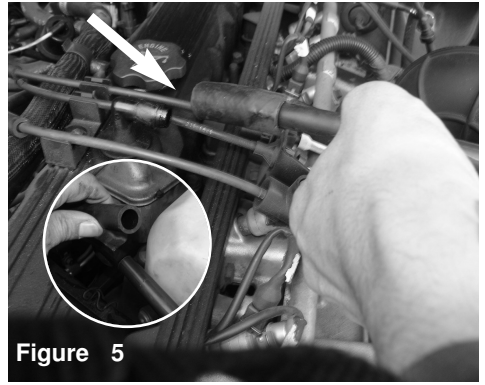


Figure 5  
Pull back the crank case line from the engine. If equipped with vacuum line, pull back from fitting.

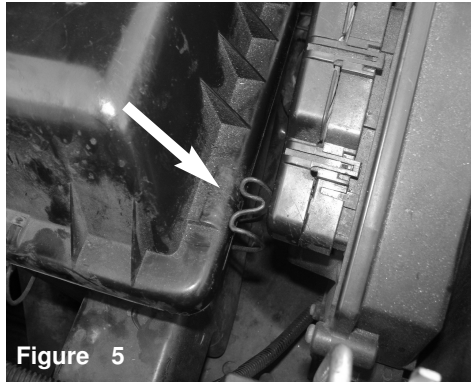


Figure 5  
Un-clip the upper half of the air box.



Figure 6  
Lift up and pull the upper half of the air box assembly.

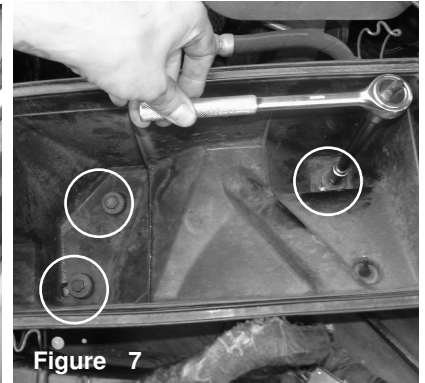


Figure 7  
Now loosen the 2 bolts and 1 nut using 13mm socket and ratchet.



Figure 8  
Remove the bottom half of the air box.

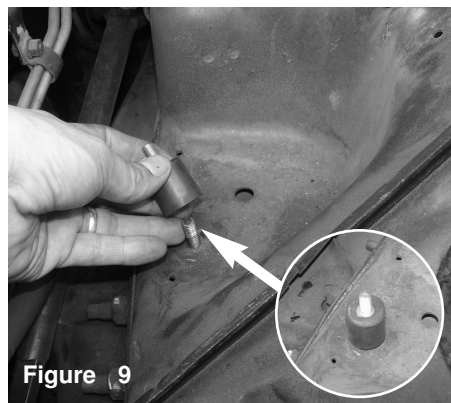


Figure 9  
Secure the vibra mount to the threaded fitting which the stock air box mounted to. Secure the vibra mount till it bottoms out.

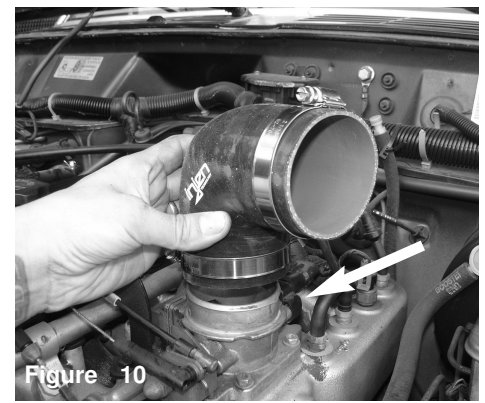


Figure 10  
Now with the shortest side of the elbow hose, install to the throttle body with clamps provided.

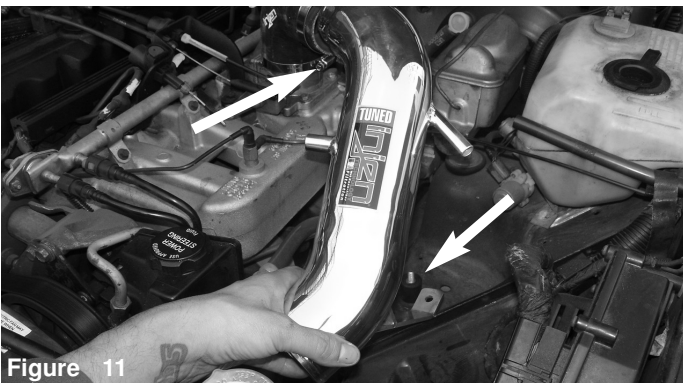


Figure 11  
Install the intake into the vehicle and position the bracket to the vibra mount and the tube to the elbow hose.

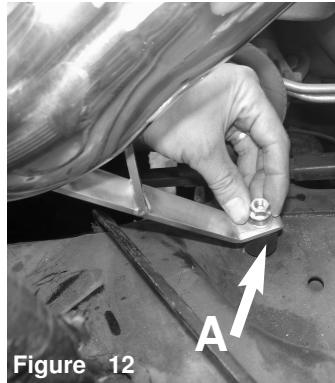
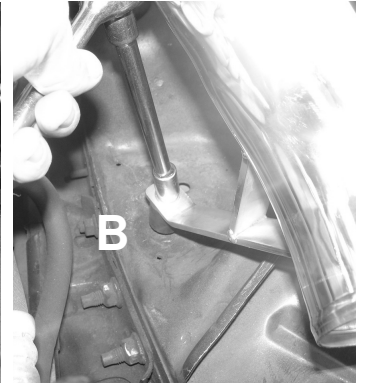
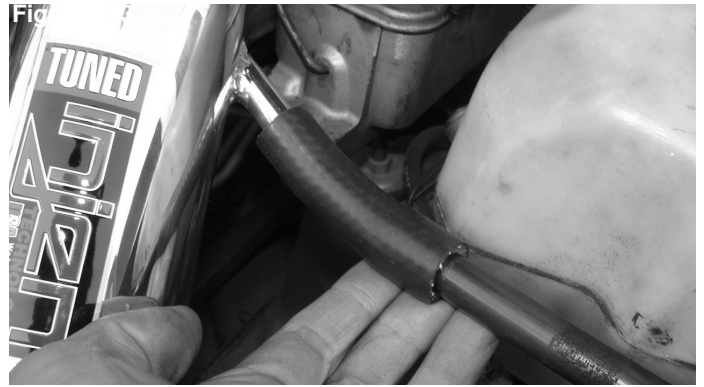


Figure 12  
A) Secure the bracket using the washer and nut.  
B) Tighten using 12mm socket and ratchet.





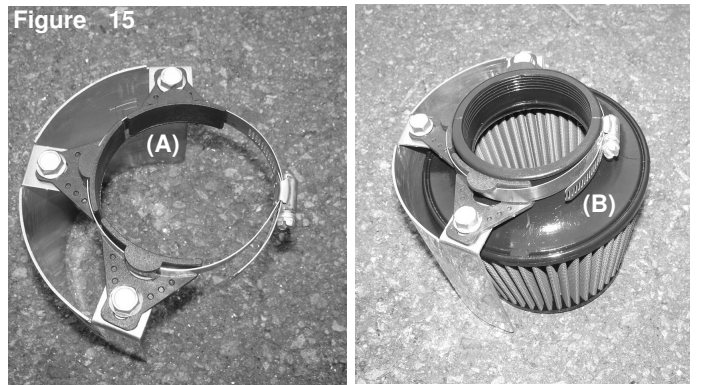
Now install the 12mm hose to the fitting on the intake tube. If not equipped use provided vinyl plug.



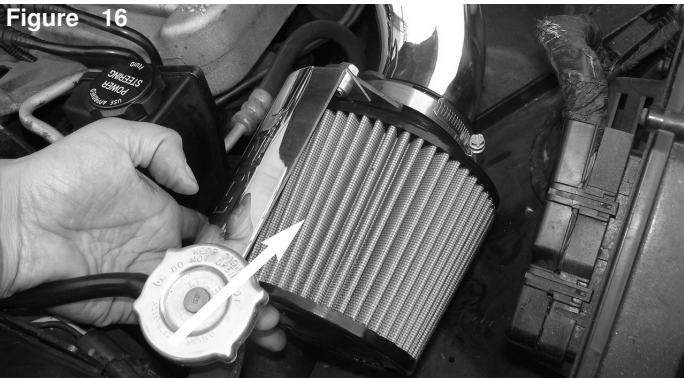
Now secure to the factory plastic fitting if applicable.



Install the 15mm hose to the engine and the fitting on the intake tube.



A) Install the heat shield clamps to the tabs on heat shield. Secure using provided hex screws. Do not tighten.  
B) Install the filter to the inside of the tabs. Position the filter and slide the clamp over the heat shield clamps. Tighten the screws using 13mm socket or wrench.



Install the air filter with heat shield to the intake tube and tighten the clamp using 8mm nut driver. Position the air filter for the best fit and desired position.



Position the intake so that it does not hit any lines or come close to anything. Your Injen intake installation is now complete. Check for any rubbing or any rattling. Tighten all clamps and re-tighten if necessary.

1. Upon completion of the installation, reconnect the negative battery terminal before you start the engine.
2. Align the entire intake system for the best possible fit. Once the intake has been properly fitted continue to tighten all nuts, bolts and clamps.
3. Periodically, recheck the alignment of the intake system and make sure there is proper clearance around and along the length of the intake. Failure to follow proper maintenance procedures may cause damage to the intake and will void the warranty.
4. Start the engine and listen carefully for any odd noises, rattles and/or air leaks prior to taking it for a test drive. If any problems arise go back and check the vacuum lines, hoses and clamps that maybe causing leaks or rattles and correct the problem.
5. Check the filter for excessive dirt build up. Clean or replace the filter with an original Injen filter (can be bought on-line at "injenonline.com"). Congratulations! You have just completed the installation of the best intake system sold on the market. Enjoy the added power and performance of your new intake system.