



Part number SES1900ICP
2011-12 NISSAN Juke
1.6L TURBO 4cyl.

- 1- 2 piece intercooler pipe kit
- 1- 2-1/2" hump hose (#3034)
- 1- 2-3/4" elbow hose (#3173)
- 2- Power-Band .048 (#4004)
- 2- Power-Band .040 (#4003)
- 1- M6 vibra-mount male/female (#6028)
- 1- M6 flange nut (#6002)
- 2- Fender washer (#6010)
- 1- M6x16 hex screw (#6005)
- 1- 1/4-20" flange nut (#8038)
- 1- 4 page instruction

Note: All parts and accessories are sold on-line at **"injenonline.com"**

Note: The C.A.R.B. Exempt sticker must be attached under the hood in a manner such that it is easily viewed by an emissions inspector.

Congratulations! You have just purchased the best engineered, dyno-proven air intake system available.

Please check the contents of this box immediately.

Report any defective or missing parts to the Authorized Injen Technology dealer you purchased this product from. Before installing any parts of this system, please read the instructions thoroughly. If you have any questions regarding installation please contact the dealer you purchased this product from.

Installation DOES require some mechanical skills. A qualified mechanic is always recommended.

*Do not attempt to install the intake system while the engine is hot. The installation may require removal of radiator fluid line that may be hot.

Injen Technology offers a limited lifetime warranty to the original purchaser against defects in materials and workmanship. Warranty claims must be handled through the dealer from which the item was purchased.

Injen Technology 244 Pioneer Place Pomona, CA 91768 USA

Please check the contents of this box immediately.

Note: This intake system was Dyno-tested with an Injen filter and Injen parts the use of any other filter or part will void the warranty and CARB exemption number.

Parts and accessories are available on line at "Injenonline.com"

Note: The installation of this cold air intake does require mechanical skills. Removal of the front bumper requires loosening and removing several plastic plugs and screws that may be difficult. It is recommended that this system be installed by a professional mechanic. Be sure to disconnect the negative terminal before proceeding.

Congratulations! You have just purchased the worlds first tuned intake system.

MR Technology, Leading the way!

"The Worlds First Tuned Air Intake System"™



Figure 1



Figure 2



Figure 3

Remove the engine cover. Loosen the 2 nuts holding in the upper intercooler piping flange cast piece located on the turbo housing. Use a 13mm deep socket and ratchet.

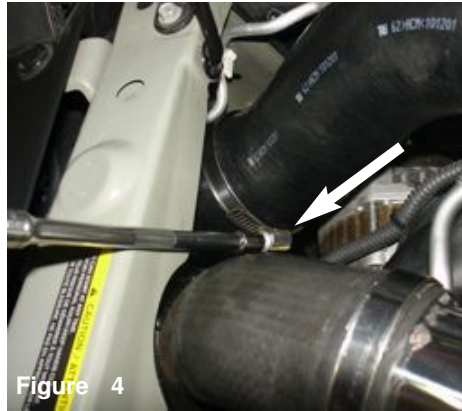


Figure 4

Loosen the clamp on the intercooler side of the upper intercooler pipe using 8mm nut driver or ratchet and socket.



Figure 5

Pull back vacuum line from the clip on the cast piece.



Figure 6

With 10mm socket and ratchet loosen the 2 screws holding in the vacuum valve.



Figure 7

Now remove the 2 screws holding in the valve, remove and pull back.



Figure 8

Loosen the screw and nut holding in the bracket that is connected to the cast piece and engine. Remove the bracket from the vehicle.



Figure 9

Pull back the hose that is connected to the cast piece using pliers.

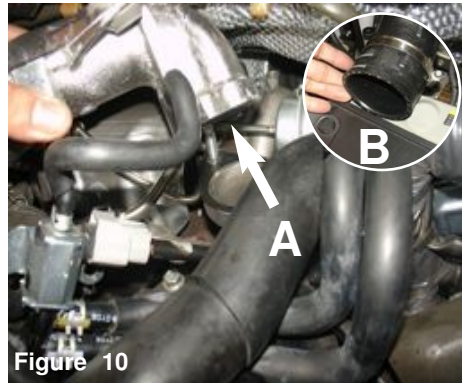


Figure 10

A) Carefully lift up the cast piece and remove from the vehicle. B) Now pull back the hose at the intercooler pipe and remove from the vehicle.



Figure 11

Complete upper intercooler pipe assembly removed from the vehicle.



Figure 12

NOTE: Save the factory gasket and re-use for the new injen intercooler pipe.

Page 2 of Part# SES1900ICP



Figure 13

Install the 2-1/2" hump hose to the intercooler with clamps provided and tighten the clamp on the intercooler only using 8mm socket and ratchet.



Figure 14

Now install the provided m6 male/female vibra mount to the fitting on the bracket and secure.



Figure 15

Install the upper intercooler tube assembly into the vehicle and position the bracket to the vibra mount. Do Not Tighten.



Figure 16

Secure the flange using original nuts. Do not Tighten. **NOTE: Make sure the flange sits flat.**



Figure 17

Now secure the valve to the fitting on the intake tube, tighten using provided 1/4-20" nut.



Figure 18

Tighten the clamp on the hump hose using 8mm nut driver.



Figure 19

Now tighten the 2 factory nuts on the flange using deep socket 13mm and ratchet.



Figure 20

Install the hose from step 9 to the fitting on the intake tube and secure using the factory clamp.



Figure 21

Secure the bracket using the provided M6 nut and washer. Tighten using 10mm wrench.



Figure 22

Now remove the lower intercooler pipe.



Figure 23

Disconnect the temperature sensor harness, and pull the line away from the pipe.



Figure 24

With pliers disconnect the 2 lines connected to the factory diverter valve.



Figure 25

Loosen the 10mm screw holding in the lower intercooler pipe. Loosen the clamp on the hose using 8mm nut driver.



Figure 26

Loosen the clamp on the throttle body using 8mm nut driver.



Figure 27

Pull the pipe out from the hose, and remove the lower intercooler pipe out of the vehicle.



Figure 28

Loosen the 2 screws holding in the diverter valve, save screws for later install and remove the diverter from the stock intercooler pipe.



Figure 29

Loosen the temperature sensor from the lower intercooler pipe and remove, now install to the new injen upper intercooler pipe and secure using factory screw.



Figure 30

Now install the diverter valve to the new intercooler tube and secure using original screws. Tighten using 10mm socket and ratchet.



Figure 31

Install the 2-3/4" elbow hose to the throttle body with clamps provided. Do not tighten.

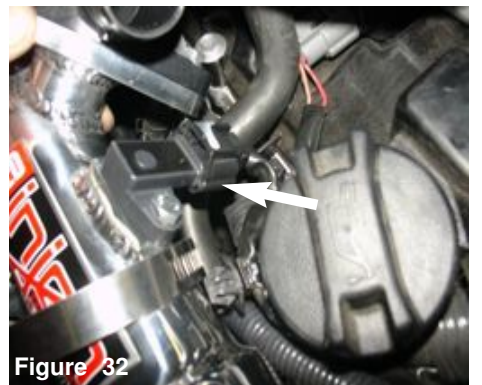


Figure 32

Install the new intercooler tube, first re-connect the Temperature sensor harness.



Figure 33

Now position the intercooler pipe to the elbow hose and the intercooler hose. Do not tighten.



Figure 34

With provided hex screw and fender washer secure the bracket to the threaded insert from step 25. Tighten the bolt using 10mm socket and ratchet.



Figure 35

Position for best fit and tighten the clamps on the throttle body using 8mm nut driver.

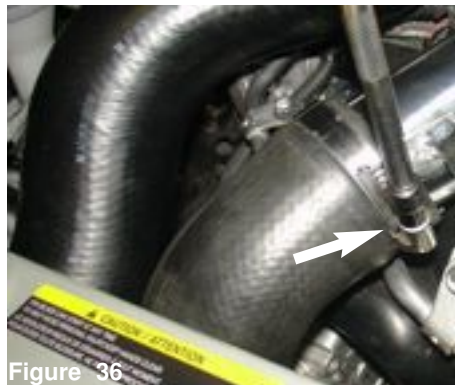


Figure 36

Tighten the clamp on the intercooler hose using 8mm nut driver.



Figure 37

Re-connect the 2 lines to the diverter valve.



Figure 38

Secure using pliers.



Figure 39

Check the entire intercooler kit for best possible fit, once proper clearance has been made through out the length of the kit, continue to tighten all nuts, bolts and clamps.



Figure 40

Congratulations! You have just completed the installation intercooler kit. Periodically, check the system for fitment, this will enhance the life of your intercooler system, failure to do so will void the warranty.

1. Upon completion of the installation, reconnect the negative battery terminal before you start the engine.
2. Align the entire intake system for the best possible fit. Once the intake has been properly fitted continue to tighten all nuts, bolts and clamps.
3. Periodically, recheck the alignment of the intake system and make sure there is proper clearance around and along the length of the intake. Failure to follow proper maintenance procedures may cause damage to the intake and will void the warranty.
4. Start the engine and listen carefully for any odd noises, rattles and/or air leaks prior to taking it for a test drive. If any problems arise go back and check the vacuum lines, hoses and clamps that maybe causing leaks or rattles and correct the problem.
5. Check the filter for excessive dirt build up. Clean or replace the filter with an original Injen filter (can be bought on-line at "injenonline.com"). Congratulations! You have just completed the installation of the best intake system sold on the market. Enjoy the added power and performance of your new intake system.