



Part number SP2093
2006-09 Lexus IS250 2.5L V6
Not CARB legal

- 1- MR Tech Tuned intake
- 1- 3.00" Injen filter (#1014)
- 1- 3" straight hose (#3044)
- 2- Power-band (.362) .048 (#4004)
- 1- m6 Vibra-mount (#6020)
- 1- m6 flange nut (#6002)
- 1- Fender washer (#6011)
- 1- 4 page Instruction

Note: Hydro-shields, filter charger kits and replacement filter are sold on-line at:

"injenonline.com"

Hydro-shield sold for this application is X-1033

PRODUCT DISCLAIMER AND LIABILITY WAIVER:

THIS PRODUCT IS DESIGNED FOR OFF-ROAD or COMPETITION USE ONLY.

Due to the removal of the factory air box assembly, which contains a Non-removable Hydro-Carbon Element. Any aftermarket intake system that removes the factory air box assembly are to be used for off-road use only. Please keep all OEM intake system components for future use.

Congratulations! You have just purchased the best engineered, dyno-proven cold air intake system available.

Please check the contents of this box immediately.

Report any defective or missing parts to the Authorized Injen Technology dealer you purchased this product from. Before installing any parts of this system, please read the instructions thoroughly. If you have any questions regarding installation please contact the dealer you purchased this product from. Installation DOES require some mechanical skills. A qualified mechanic is always recommended.

*Do not attempt to install the intake system while the engine is hot. The installation may require removal of radiator fluid line that may be hot.

Injen Technology offers a limited lifetime warranty to the original purchaser against defects in materials and workmanship. Warranty claims must be handled through the dealer from which the item was purchased.

Injen Technology 244 Pioneer Place Pomona, CA 91768 USA

Please check the contents of this box immediately.

Note: This intake system was Dyno-tested with an Injen filter and Injen parts. The use of any other filter or part will void the warranty and CARB exemption number.

Parts and accessories are available on line at "Injenonline.com"

Note: The installation of this cold air intake does require mechanical skills. Removal of the front bumper requires loosening and removing several plastic plugs and screws that may be difficult. In addition to removing the bumper, you will also have to remove the air resonator box, battery and tray when beginning this installation. **Injen strongly recommends that this system be installed by a professional mechanic.**

MR Technology, "The World's First Tuned Intake System!"

Optimum performance, Factory safe air/fuel ratio.

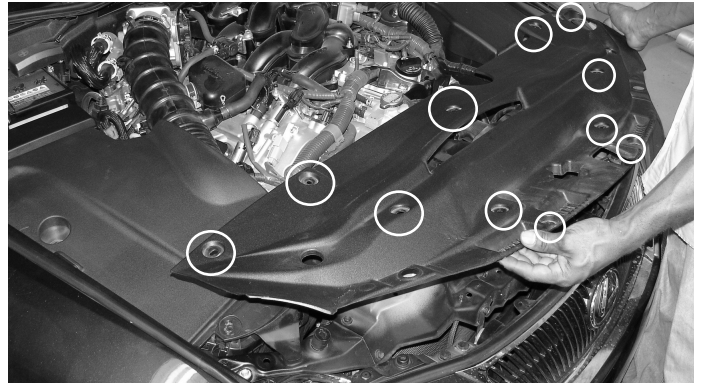


Tools required:

- 1. 3/8 ratchet
- 1. 3/8 extension
- 1. 10mm socket
- 1. 8mm nut driver
- 1. pliers
- 1. flat head screwdriver
- 1. Phillips screwdriver



Pull the engine cover from the intake manifold by firmly pulling in a upward motion.



Depress the center stem on the plastic clip and remove all 11 clips from the radiator top shroud. Once all clips have been removed continue to remove the plastic front shroud.



Now, continue to remove the side accessory cover which lays over the air intake box cleaner.



Loosen and remove one bolt (A) depress and pull the last remaining plastic clip (B) now holding the air scoop in place.



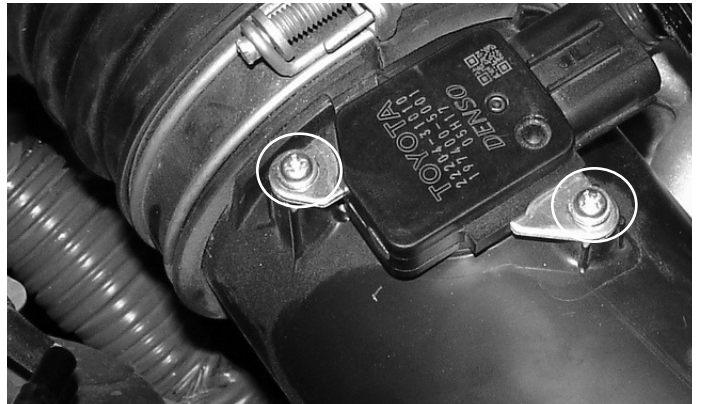
The front air scoop is now removed from its current location for now.



Loosen the only remaining metal clamp which secures the air duct to the throttle body as shown above.



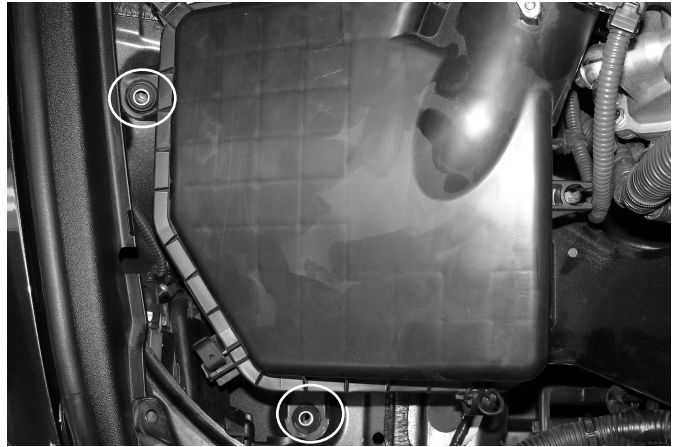
Disconnect the electrical sensor connector from the MAFS.



Loosen and remove the two sheet screws that fasten the MAFS to the sensor housing.



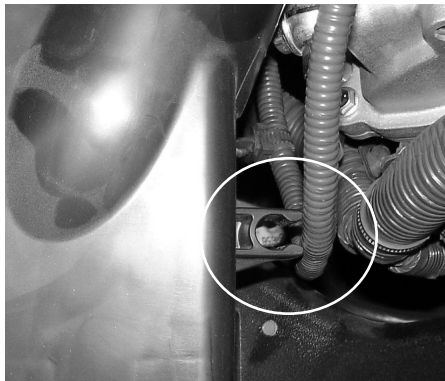
Remove the MAFS from the sensor housing as shown above. Set the MAFS to one side to be installed later in the instructions.



Loosen and remove the two bolts that secure the air box cleaner over the grommets.



Lift and Pull the air box cleaner from the lower grommets. Before pulling the air box out, unclip sensor harness from the air box side clip (A).



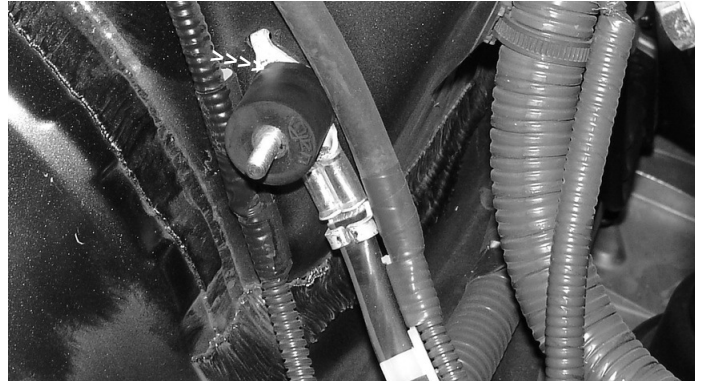
Here is a close up of the sensor harness removed from the air box clip.



Use a 10mm socket and ratchet to remove the screw that secures the grounding wire to the fender well.



Once the screw has been removed, continue to place the vibra-mount into the pre-tapped hole as shown above.



Screw vibra-mount firmly into the grounding wire pre-tapped hole until it bottoms out. Make sure the vibra-mount snug and tight over the grounding wires before moving on.



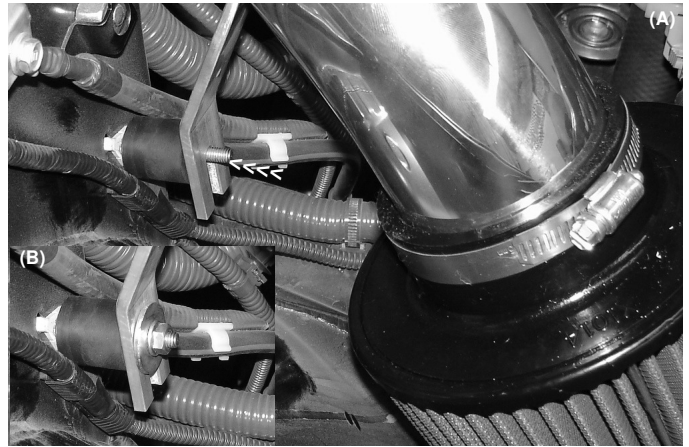
Press the 3 straight hose over the throttle body and use two power clamps. Use two power-clamps and be sure to tighten the clamp directly over the throttle body end for now.



Slip the three inch filter over the end of the intake until it butts up against the filter stops. Once the filter has been firmly placed, continue to tighten the filter neck clamp.



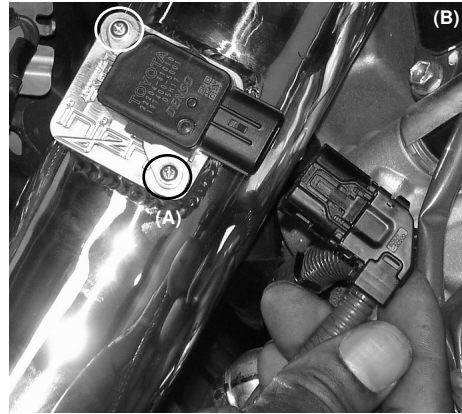
Insert the assembled air filter and intake into the engine compartment. Press the top end of the intake into the 3 throttle body hose, align the intake bracket to the vibra-mount stud and semi-tighten the clamp.



The intake bracket is aligned to the vibra-mount stud (A). Use the m6 flange nut and fender washer to secure the intake in place (B).



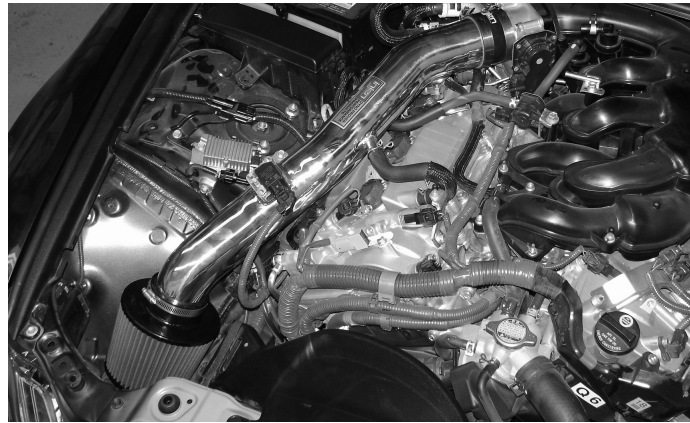
Prior to inserting the MAFS into the machined adapter, use a light weight oil around the O-ring then press the MAFS sensor into the open hole.



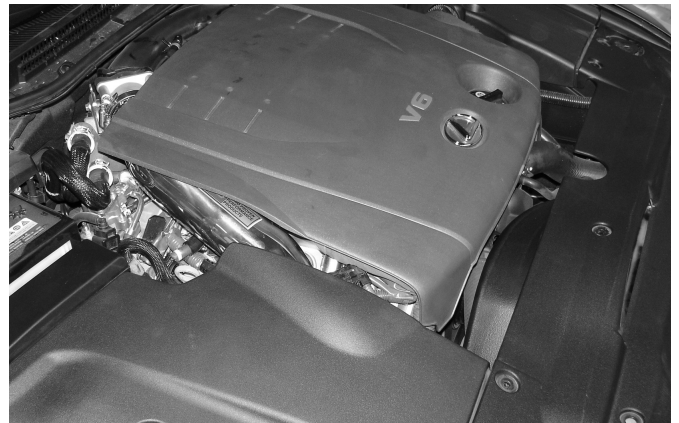
Use the stock screws to secure the MAFS in the sensor adapter (A). Firmly press the electrical sensor connector into the MAFS until it clicks in place (B).



Take the stock breather hose and press it over the 5/8 intake port, the tension clamp is used to secure the hose over the intake port.



Align the entire intake for the best possible fit. Be sure the intake does not rub or hit any moving parts in the engine compartment, once you have checked the entire intake, continue to tighten all nuts, bolts and clamps.



Once the intake has been fitted for a perfect fit, continue to replace the plastic air intake scoop, passenger side accessory cover and the engine cover.

1. Upon completion of the installation, reconnect the negative battery terminal before you start the engine.
2. Align the entire intake system for the best possible fit. Once the intake has been properly fitted continue to tighten all nuts, bolts and clamps.
3. Periodically, recheck the alignment of the intake system and make sure there is proper clearance around and along the length of the intake. Failure to follow proper maintenance procedures may cause damage to the intake and will void the warranty.
4. Start the engine and listen carefully for any odd noises, rattles and/or air leaks prior to taking it for a test drive. If any problems arise go back and check the vacuum lines, hoses and clamps that maybe causing leaks or rattles and correct the problem.
5. Check the filter for excessive dirt build up. Clean or replace the filter with an original Injen filter (can be bought on-line at "injenonline.com"). Congratulations! You have just completed the installation of the best intake system sold on the market. Enjoy the added power and performance of your new intake system.